

I've started to create the new structure with the "question editor" page. My first goal was to create a very simple, easy to use, clean interface with as less irritating visual elements as possible. My second goal was to minimize the difference between "preview mode" (what regular users also see while filling out a test) and the "edit mode" – this means, that every textual elements are (will be) in-place editable – switching between edit and preview mode will only add/remove the edit controls and will change the taskbar according to the new situation.

Taskbar: this is a key element in the whole application – a content sensitive element containing the "global" controls for the current page depending on its type. It might have many functions, and it is always visible in the bottom of the browser window – just like the windows taskbar or OS X dock.

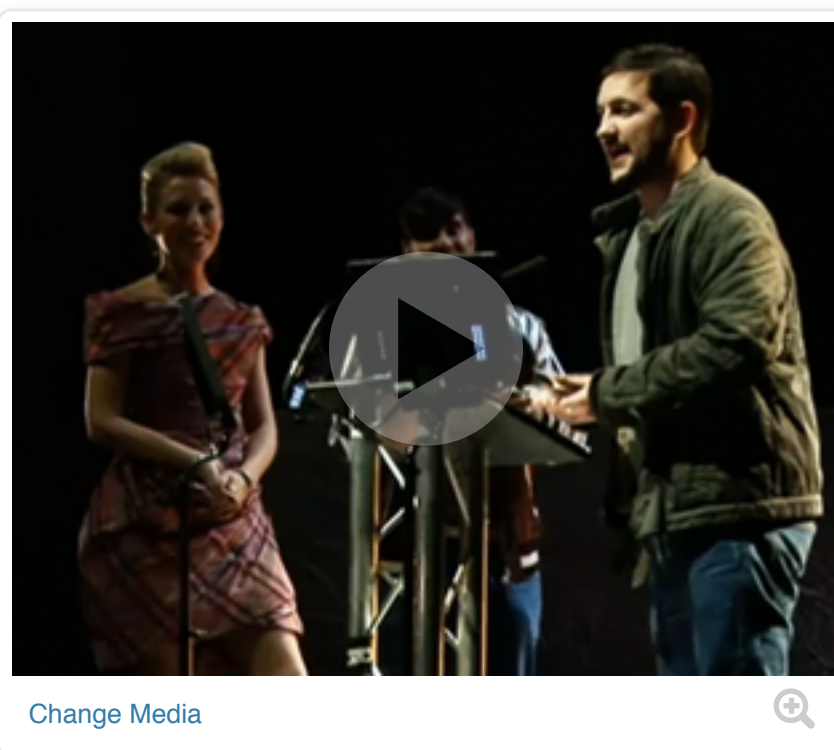
In the design process it's always important for me to take care on handheld devices (tablets, smartphones). This application page will be extremely usable on tablets, but can be used simply (in one question/page mode) on smart phones also.

The design shows the multiple question/page mode, because I think that most of the editors will use normal or at least laptop screens – it's simply easier to just scroll down than pointing on an arrow with our mouse/trackpad. The one question/page mode has not to much differences – it has only two arrows to navigate between questions.

The most important interactive elements are explained and can be seen on the "interaction map" (next page).

Title of Your Set

1. [Close]



What was Sarah's name before Sarah? What do you think, was it a mistake to change her name?

- She's name was Seraphine. I think it was a mistake to change. [Add] [Close]
- Sarah is the first name in her life. [Add] [Close]
- What? Definitely Yes! [Add] [Close]

Add Hint

+ Add New Question

2. [Close]

× Text only question, no media

- Upload an image/video.
- Link to YouTube video:
- Use an already uploaded video.

Do it!

The girlfriend of Emily – Leon's sister and everyone's lover – is pregnant. Who is the father?

- John Kevorkian [Add] [Close]
- Her best friend, Kevin. [Add] [Close]
- Is she pregnant? Really? [Add] [Close]

Add Hint

+ Add New Question

3. [Close]

There is no media assigned to this question. You can turn it back with the icon on the left! Ok?



- Yes! [Add] [Close]
- No. [Add] [Close]

Add Hint

+ Add New Question

INTERACTION MAP FOR SOME CASES:

A INDICATING EDITABLE ELEMENTS

The indication of editable elements are important: on mouse over the editable element it will get an indication.

B1 B2 ADDING NEW ANSWER

Also very important - this will be the most frequently used function. I recommend to also create a keyboard shortcut for it. Clicking on "+" sign will add a new answer line to the question - the active area will be the new line with the placeholder text selected (the user will be able to start typing as soon as clicking on add)

C ADDING NEW QUESTION

New questions start up case: the unfilled media box (D), placeholder text for question (default selected after click), one answer (not marked as correct) and the hint placeholder (also editable) - like in the second example.

D MEDIA UPLOADER PANEL

Another key function: assign an image/video to the question. 3 possibilities:

1. Upload (the standard upload progress with progress bar - after the successful upload the proper element will appear in the box - you can continue your work while uploading)
2. Linking YouTube videos.
3. Select a previously uploaded media.

+1. No media, as shown in the 3. example.

E GET MEDIA BACK

If we disabled media for a question an icon will appear on the left - clicking on it will give the media box back for us.

F1 F2 QUESTION INSPECTOR

With the QI we will be able to navigate between questions as fast as possible. Marks indicate which questions are ready and which is the currently active question. These marks are clickable - then we will be "smooth-scrolled" to the proper question. On mouse over the marks will give us the number and the first N words of the question as a tooltip. With quick search: just start typing the words and the list of questions will automatically get narrower. QI is switchable from taskbar (eg. we don't use it when we are creating a set from scratch).

The screenshot displays the Yappr.com interface with several key elements and interaction points marked with red circles and letters:

- Header:** Yappr.com logo, language selection (English), user profile (Welcome Graham), and sign out button.
- Navigation:** Create New Set, Community, Your Sets, Tools, and Share buttons.
- Question 1:** A video question titled "Title of Your Set". The video shows a man and a woman on stage. The question asks: "What was Sarah's name before Sarah? What do you think, was it a mistake to change her name?". The first answer, "She's name was Seraphine. I think it was a mistake to change.", is selected and highlighted in green. Other answers include "Sarah is the first name in her life.", "What? Definitely Yes!", and "Just Start typing".
- Question 2:** A text-only question titled "Just Start typing the question". The question asks: "There is no media assigned to this question. You can turn it back with the icon on the left! Ok?". The first answer, "Yes!", is selected and highlighted in green. Other answers include "No.". A media icon on the left is highlighted with a red circle 'E'.
- Question 3:** A question titled "There is no media assigned to this question. You can turn it back with the icon on the left! Ok?". The first answer, "Yes!", is selected and highlighted in green. Other answers include "No.". A media icon on the left is highlighted with a red circle 'E'.
- Taskbar:** Save Set, Preview Mode, Delete Set, Hide Question Inspector, and Invite to Friends to Create buttons. A search bar is also present.